

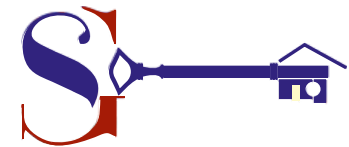


WE END YOUR SEARCH FOR A
PERFECT HOME!

—
SG ESTATE III
—

A FOUNDATION
OF **TRUST**,
A FUTURE
OF **COMFORT**

A Premium Plotted Development by:



THE KEY TO YOUR
DREAM HOME

SG REALTY

Presents

SG Estate III

A premium residential layout following the grand success of our Previous Projects SG Estate I & II. **BIGGER, BETTER AND BUILT FOR THE FUTURE.**

Why Us ?

SG Realty upholds the vision of creating the best for you and your loved ones, providing a place where you can nurture your dreams and turn them into reality. Because a home is more than just walls and rooms. It's where memories are made, bonds grow stronger, and life feels complete.

THE KEY TO YOUR
DREAM HOME



Transforming
The Idea of Property Ownership

With the one to create spaces
that stand up to your Idea of a Dream Home.

WORLD-CLASS AMENITIES

More Than Just a Home
A Lifestyle SG ESTATE III is designed to offer **QUALITY LIVING** with top-tier development standards.

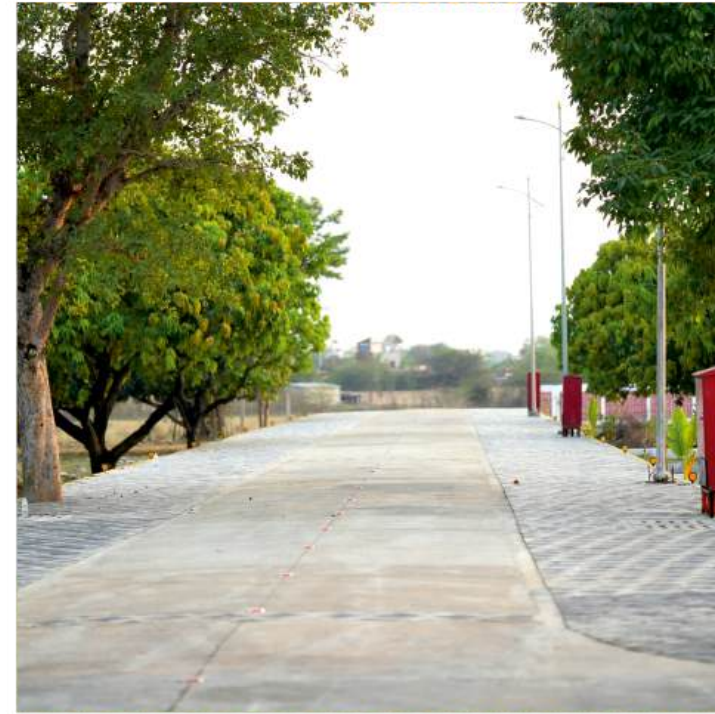
MODERN INFRASTRUCTURE & GREEN LIVING

- Kid's Play Area
- Green Gym
- Boundary Walls
- Gazebo
- Signage
- Smart Street Lights
- Concrete Roads
- Fruit Bearing Trees
- Multi Sport Court
- Parking

SUSTAINABLE & SMART DEVELOPMENT

- Sewage Treatment Plant
- Rainwater Harvesting
- Borewell
- Personal Water Pipelines
- Solar Pathway Lights

THE KEY TO YOUR DREAM HOME



OUR PROMISE

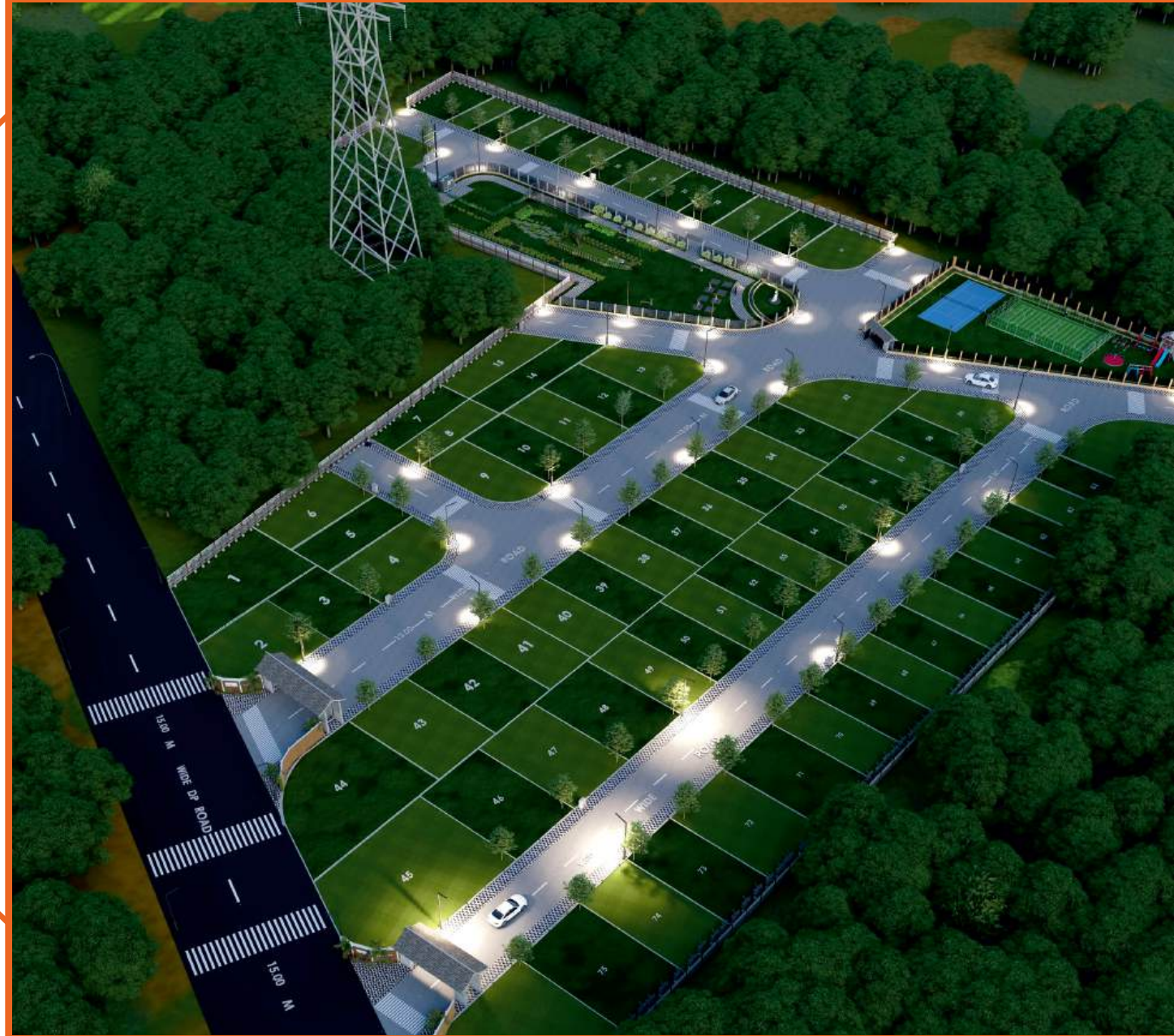
Unmatched Quality & Commitment

- A legacy of successful projects
SG Estate I & II
- Premium construction standards
ensuring Long-term value
- A community designed with Care,
Convenience & Sustainability

MAKE THE SMART MOVE TODAY!

Own a piece of SG Estate III and step into a
Future-ready, Well-connected, and Premium
lifestyle in a high growth potential area.

THE KEY TO YOUR
DREAM HOME



— — — — —

PLOTS WITH SQ FOOT AREA

— — — — —

S.No	Plot size (sq ft)
1	2324.335
2	2576.45
3	1485.432
4	1665.998
5	1291.68
6	1385.155
7	1401.408
8	1362.077
9	1370.214
10	1307.826
11	1307.826
12	1307.826
13	1468.436
14	1801.355
15	1503.645
16	1260.152
17	1147.69
18	1357.61
19	1371.071
20	1049.49

S.No	Plot size (sq ft)
21	1049.49
22	1049.49
23	1162.512
24	1162.512
25	1162.512
26	1210.95
27	1210.95
28	1210.95
29	1372.41
30	1372.41
31	1623.739
32	1597.722
33	1307.826
34	1307.826
35	1210.95
36	1210.95
37	1210.95
38	1259.388
39	1259.388
40	1259.388

S.No	Plot size (sq ft)
41	1259.388
42	1469.286
43	1614.6
44	2747.403
45	2313.55
46	1258.043
47	1346.846
48	1346.846
49	1154.439
50	1154.439
51	1154.439
52	1154.439
53	1110.038
54	1110.038
55	1110.038
56	1110.038
57	1110.038
58	1110.038
59	1515.410
60	1515.324

S.No	Plot size (sq ft)
61	1110.038
62	1110.038
63	1110.038
64	1110.038
65	1110.038
66	1110.038
67	1154.439
68	1154.439
69	1154.439
70	1154.439
71	1406.048
72	1406.048
73	1258.043
74	1258.043
75	1258.043
76	2504.933

THE KEY TO YOUR
DREAM HOME

LOCATION & LANDMARKS

Proximity to Key Landmarks:

A map of SG Estate 3 and around showing the maximum landmarks

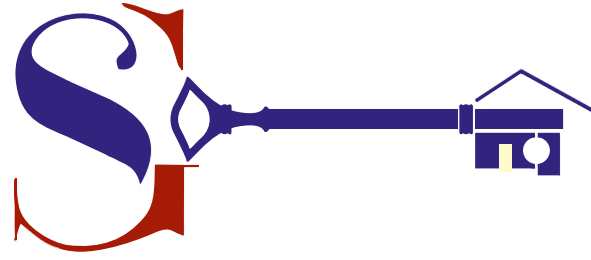
- ♦ Balasaheb Thackeray Gorewada International Zoological Park – 5 min
- ♦ Podar International School – 5 min
- ♦ Delhi Public School Lava – 10 min
- ♦ SB Jain Institute of Technology & Management – 10 min
- ♦ Ramesons Hotel – 5 min
- ♦ J D College of Engineering & Management – 15 min
- ♦ Shri Ramdeobaba College of Engineering – 15 min
- ♦ Dr. Babasaheb Ambedkar Museum & Memorial – 3 min
- ♦ Global Indian International School – 15 min

Effortless Travel

Seamless access to the **Outer Ring Road**, making city connectivity a breeze. A well-planned layout that ensures smooth accessibility and convenience

THE KEY TO YOUR DREAM HOME





SG ESTATE III



P50500080670

Contact us:

Office: 31, VCA Complex, Civil Lines, Nagpur, 440001

Call/WhatsApp:

Website: **www.sgrealty.in**

Instagram: **[sg.realty_](https://www.instagram.com/sg.realty_)**

The project is registered as **SG ESTATE 3** Group bearing RERA Registration No. **P50500080670**.
Available on the website <https://maharera.mahaonline.gov.in>, *T&C Apply